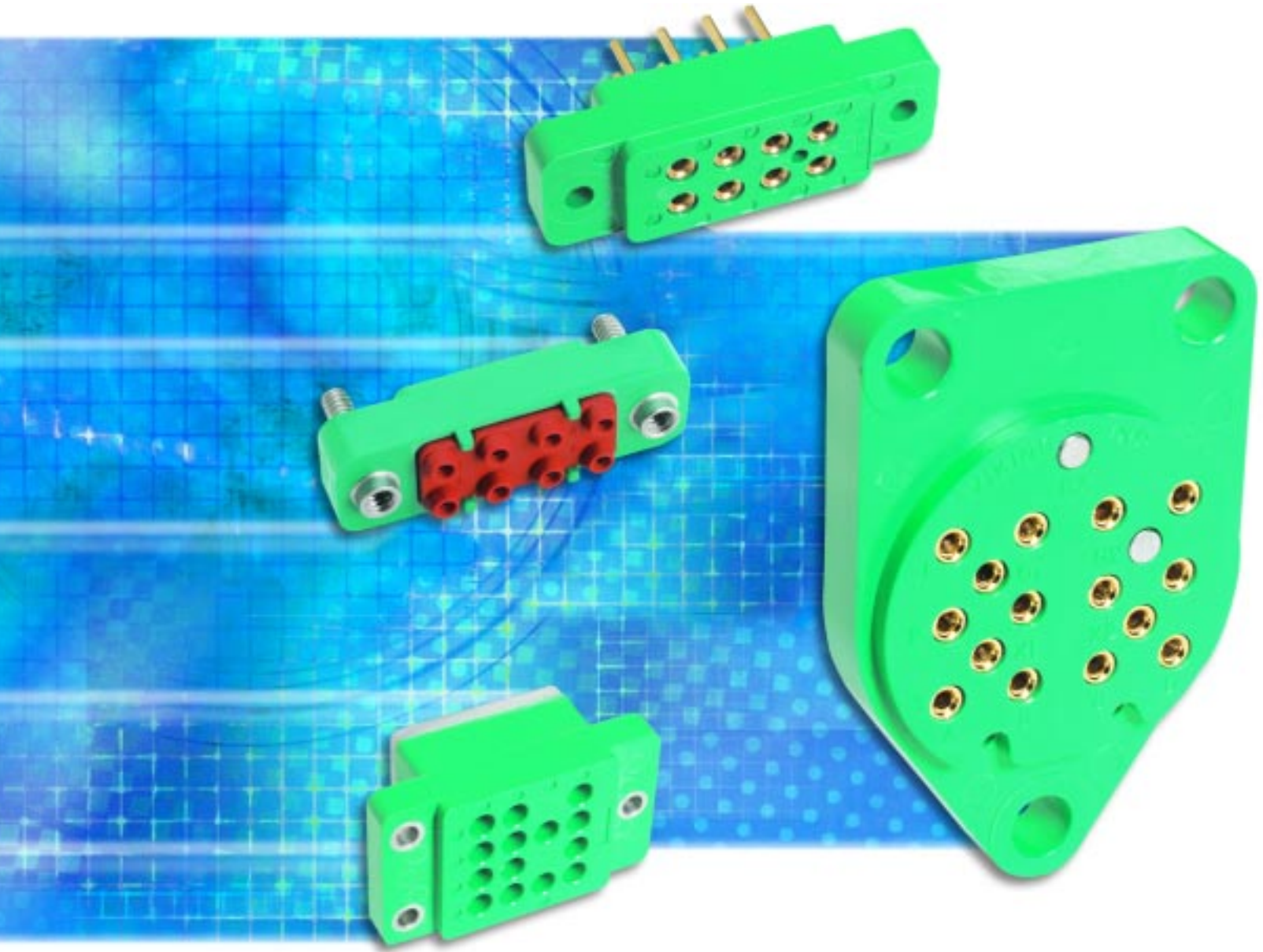




RELAY SOCKETS CATALOG



INTRODUCTION

WPI Viking Electronics manufactures one of the most complete series of relay sockets in the world. The sockets shown in this catalog represent the most widely used types; however, if you have a requirement for a socket not shown, consult your **WPI Viking** representative. We can custom design and tool a socket for your unique application.

At **WPI Viking**, we make certain that our relay sockets are of the highest quality, the most reliable and cost-effective products available. We have quantities in stock, ready to ship at competitive prices. We back our products with fast, friendly, efficient services designed to make doing business with us as easy as possible. Our commitment to service means we strive to satisfy our customers' needs.



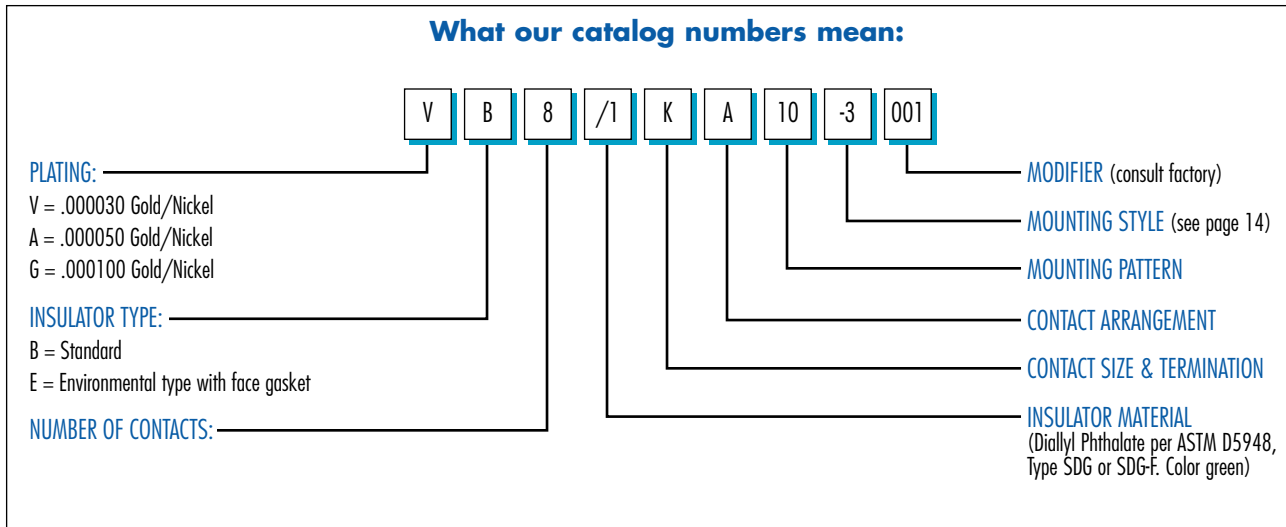
TABLE OF CONTENTS

Ordering Information	1
Series 8A	2-4
Series 8V	4-5
Series 8A11	6
Series 10C	6-7
Series 10C11	8
Series 10V	8-9
Series 14A	9
Series 16E and 16G	10
Series 16H and 24G	11
Sockets with Face Seals	12-13
Standard Socket Materials and Finishes	13
Mounting Styles and Hardware	14
Standard Socket Assembly Tools	15
Miniature Relay Sockets for MIL-PRF-6106	16
Miniature Relay Sockets for Crystal Can Relays Per MIL-PRF-6106	17
MS25462-1 and MS25330-1 Relay Sockets	18
000300-1439 (MS25462-1) & 000300-1443 (MS25330-1)	19
MIL-PRF-12883 Relay Sockets QPL	20-23
MIL-PRF-12883 Relay Sockets Panel Mounting Dimensions	24
MIL-PRF-12883 Relay Sockets, Contacts, Tools, and Torque Values	25

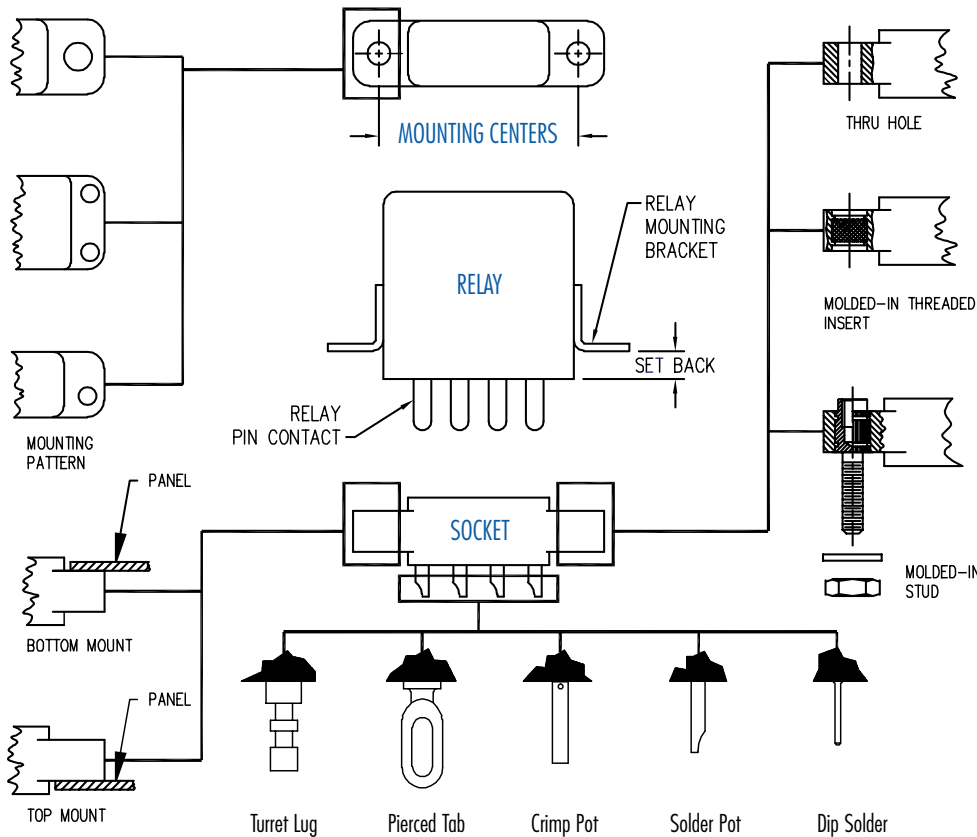
ORDERING INFORMATION

Contact your WPI Viking representative at:

WPI Viking Electronics Inc. • 5455 Endeavour Court • Moorpark, CA 93021
 Phone: 805-553-9633 • Email: sales@vikcon.com • Fax: 805-553-9655
 Visit us Online: www.wpi-interconnect.com • www.vikingconnectors.com



Relay Socket Variations:



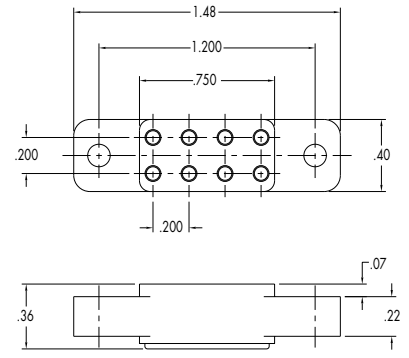
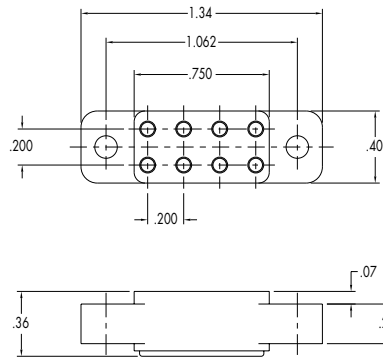
Loose studs may be used in thru hole mounts as shown below. Select and order loose studs separately as shown on page 14.

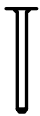



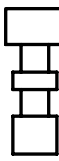
NOTE: A .086-56 stud should have a 0.096 clearance hole (-23 mount), a .112-40 stud must have a 0.125 clearance hole (-3 mount), a .138-32 stud must have a 0.150 clearance hole (-43 mount).

CONTACT TERMINATION STYLE

CONTACTS

SERIES 8A

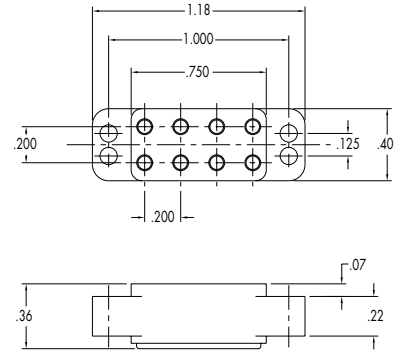
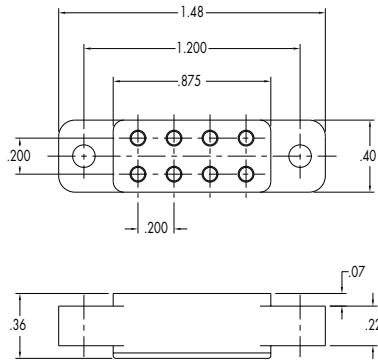


TERMINATION	TYPE	TERM ACCOM.	RELAY PIN SIZE	*AVAILABLE IN -3, -1, -2, -5 MOUNTS ONLY	*AVAILABLE IN -3, -1, -2, -5, -43 MOUNTS ONLY
 DIP SOLDER	A	.031	.031	VB8/1AA49*	VB8/1AA10*
	B	.031	.040	VB8/1BA49*	VB8/1BA10*
	F	.031	.050		
 SOLDER POT	D	No.20	.031	VB8/1DA49*	VB8/1DA10*
	R	No.20	.040	VB8/1RA49*	VB8/1RA10*
	U	No.16	.050		
 CRIMP POT	K	No.20-24	.031 <small>019-0075-002</small>	VB8/1KA49*	VB8/1KA10*
	N	No.20-24	.040 <small>019-0039-002</small>	VB8/1NA49*	VB8/1NA10*
	L	No.20-24	.050 <small>019-0087-002</small>		
	Z	No.16-20	.050 <small>019-0137-002</small>		
 PIERCED TAB	M	3 No.20	.031	VB8/1MA49*	VB8/1MA10*
	P	3 No.18	.050		
 TURRET LUG	T	No.20	.031	VB8/1TA49*	VB8/1TA10*
	V	No.20	.040	VB8/1VA49*	VB8/1VA10*

*NOTE: FOR MOUNTING STYLES AND HARDWARE, SEE PAGE 14. ADD SELECTED MOUNTING STYLE DASH NUMBER TO END OF CATALOG NUMBER.

CONTACTS

SERIES 8A



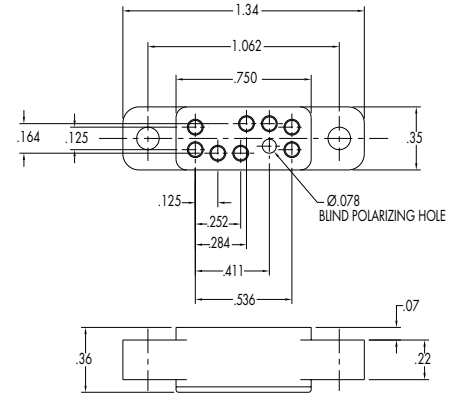
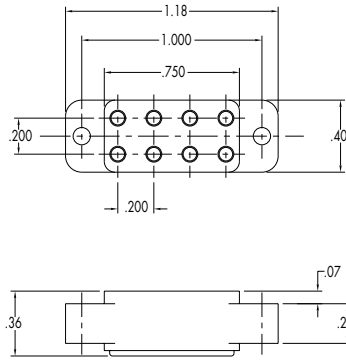
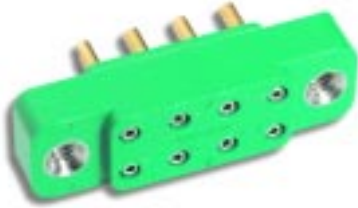
TERMINATION	TYPE	TERM ACCOM.	RELAY PIN SIZE	*AVAILABLE IN -3, -1, -2, -5 MOUNTS ONLY	*AVAILABLE IN -23 MOUNT ONLY
DIP SOLDER 	A	.031	.031	VB8/1AA9-*	VB8/1AA7-*
	B	.031	.040	VB8/1BA9-*	VB8/1BA7-*
	F	.031	.050		
SOLDER POT 	D	No.20	.031	VB8/1DA9-*	VB8/1DA7-*
	R	No.20	.040	VB8/1RA9-*	VB8/1RA7-*
	U	No.16	.050		
CRIMP POT 	K	No.20-24	.031 <small>019-0075-002</small>	VB8/1KA9-*	VB8/1KA7-*
	N	No.20-24	.040 <small>019-0039-002</small>	VB8/1NA9-*	VB8/1NA7-*
	L	No.20-24	.050 <small>019-0087-002</small>		
	Z	No.16-20	.050 <small>019-0137-002</small>		
PIERCED TAB 	M	3 No.20	.031	VB8/1MA9-*	VB8/1MA7-*
	P	3 No.18	.050		
TURRET LUG 	T	No.20	.031	VB8/1TA9-*	VB8/1TA7-*
	V	No.20	.040	VB8/1VA9-*	VB8/1VA7-*

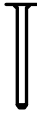



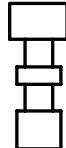
*NOTE: FOR MOUNTING STYLES AND HARDWARE, SEE PAGE 14. ADD SELECTED MOUNTING STYLE DASH NUMBER TO END OF CATALOG NUMBER.

CONTACTS

SERIES 8A

SERIES 8V

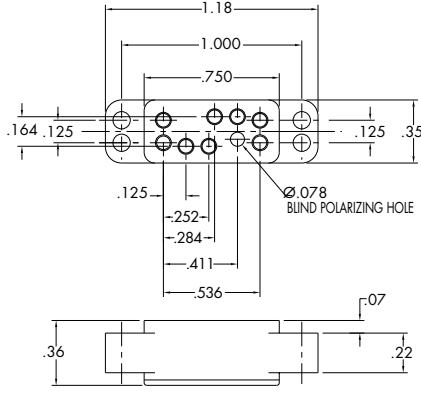
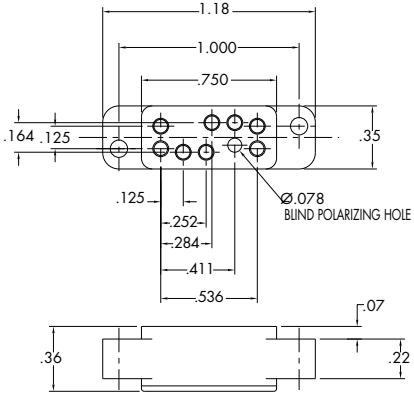


TERMINATION	TYPE	TERM ACCOM.	RELAY PIN SIZE	*AVAILABLE IN -23 MOUNT ONLY	*AVAILABLE IN -3, -1, -2, -5 MOUNTS ONLY
DIP SOLDER 	A	.031	.031	VB8/1AA19-*	VB8/1AV49-*
	B	.031	.040	VB8/1BA19-*	VB8/1BV49-*
	F	.031	.050		
SOLDER POT 	D	No.20	.031	VB8/1DA19-*	VB8/1DV49-*
	R	No.20	.040	VB8/1RA19-*	VB8/1RV49-*
	U	No.16	.050		
CRIMP POT 	K	No.20-24	.031 <i>019-0075-002</i>	VB81KA19-*	VB8/1KV49-*
	N	No.20-24	.040 <i>019-0039-002</i>	VB8/1NA19-*	VB8/1NV49-*
	L	No.20-24	.050 <i>019-0087-002</i>		
	Z	No.16-20	.050 <i>019-0137-002</i>		
PIERCED TAB 	M	3 No.20	.031	VB8/1MA19-*	VB8/1MV49-*
	P	3 No.18	.050		
TURRET LUG 	T	No.20	.031	VB8/1TA19-*	VB8/1TV49-*
	V	No.20	.040	VB8/1VA19-*	VB8/1VW49-*

*NOTE: FOR MOUNTING STYLES AND HARDWARE, SEE PAGE 14. ADD SELECTED MOUNTING STYLE DASH NUMBER TO END OF CATALOG NUMBER.

CONTACTS

SERIES 8V

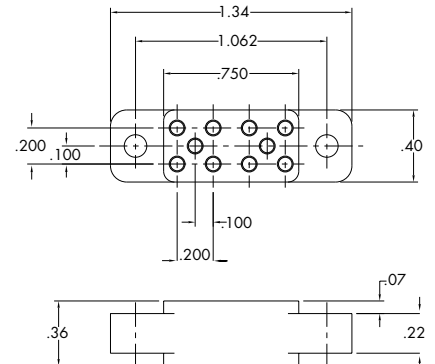
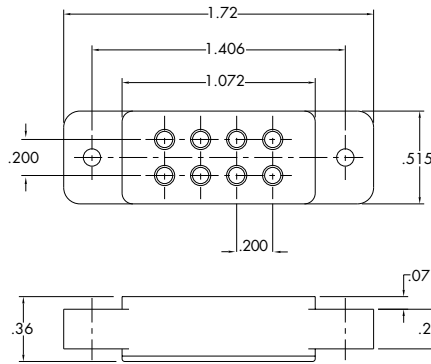


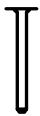



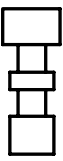
TERMINATION	TYPE	TERM ACCOM.	RELAY PIN SIZE	*AVAILABLE IN -23 MOUNT ONLY	*AVAILABLE IN -23 MOUNT ONLY
DIP SOLDER 	A	.031	.031	VB8/1AV5-*	VB8/1AV7-*
	B	.031	.040	VB8/1BV5-*	VB8/1BV7-*
	F	.031	.050		
SOLDER POT 	D	No.20	.031	VB8/1DV5-*	VB8/1DV7-*
	R	No.20	.040	VB8/1RV5-*	VB8/1RV7-*
	U	No.16	.050		
CRIMP POT 	K	No.20-24	.031 <i>019-0075-002</i>	VB8/1KV5-*	VB8/1KV7-*
	N	No.20-24	.040 <i>019-0039-002</i>	VB8/1NV5-*	VB8/1NV7-*
	L	No.20-24	.050 <i>019-0087-002</i>		
	Z	No.16-20	.050 <i>019-0137-002</i>		
PIERCED TAB 	M	3 No.20	.031	VB8/1MV5-*	VB8/1MV7-*
	P	3 No.18	.050		
TURRET LUG 	T	No.20	.031	VB8/1TV5-*	VB8/1TV7-*
	V	No.20	.040	VB8/1VV5-*	VB8/1VV7-*

CONTACTS

SERIES 8A11

SERIES 10C

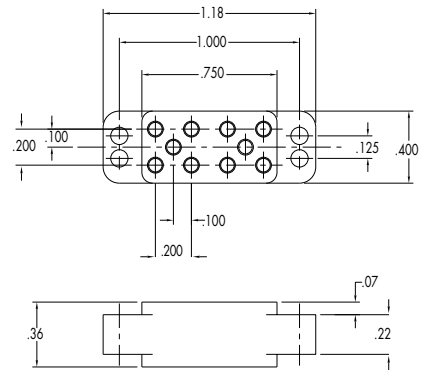
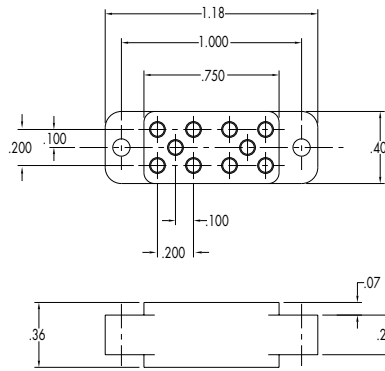


TERMINATION	TYPE	TERM ACCOM.	RELAY PIN SIZE	*AVAILABLE IN -23, -43, -57, -42, -45, -80, -41 MOUNTS ONLY	*AVAILABLE IN -3, -1, -2, -5 MOUNTS ONLY
 DIP SOLDER	A	.031	.031	VB8/1AA11-*	VB10/1AC49-*
	B	.031	.040	VB8/1BA11-*	VB10/1BC49-*
	F	.031	.050	VB8/1FA11-*	
 SOLDER POT	D	No.20	.031	VB8/1DA11-*	VB10/1DC49-*
	R	No.20	.040	VB8/1RA11-*	VB10/1RC49-*
	U	No.16	.050	VB8/1UA11-*	
 CRIMP POT	K	No.20-24	.031 <small>019-0075-002</small>	VB8/1KA11-*	VB10/1KC49-*
	N	No.20-24	.040 <small>019-0039-002</small>	VB8/1NA11-*	VB10/1NC49-*
	L	No.20-24	.050 <small>019-0087-002</small>	VB8/1LA11-*	
	Z	No.16-20	.050 <small>019-0137-002</small>	VB8/1ZA11-*	
 PIERCED TAB	M	3 No.20	.031	VB8/1MA11-*	VB10/1MC49-*
	P	3 No.18	.050	VB8/1PA11-*	
 TURRET LUG	T	No.20	.031	VB8/1TA11-*	VB10/1TC49-*
	V	No.20	.040	VB8/1VA11-*	VB10/1VC49-*

*NOTE: FOR MOUNTING STYLES AND HARDWARE, SEE PAGE 14. ADD SELECTED MOUNTING STYLE DASH NUMBER TO END OF CATALOG NUMBER.

CONTACTS

SERIES 10C



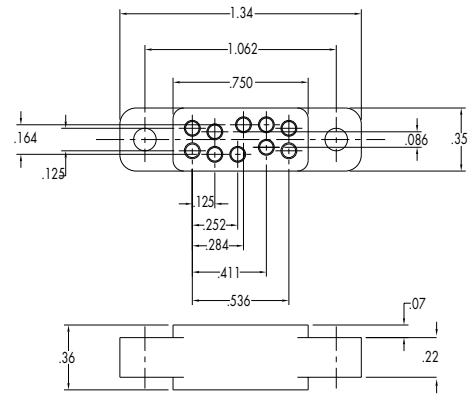
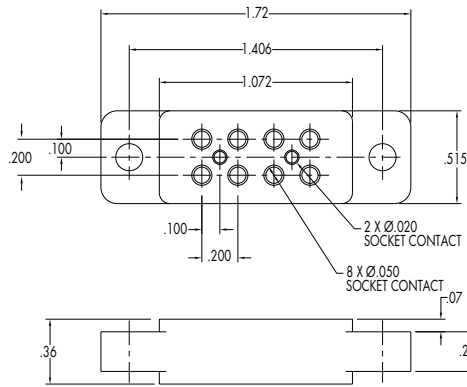
TERMINATION	TYPE	TERM ACCOM.	RELAY PIN SIZE	*AVAILABLE IN -23 MOUNT ONLY	*AVAILABLE IN -23 MOUNT ONLY
DIP SOLDER 	A	.031	.031	VB10/1AC19-*	VB10/1AC7-*
	B	.031	.040	VB10/1BC19-*	VB10/1BC7-*
	F	.031	.050		
SOLDER POT 	D	No.20	.031	VB10/1DC19-*	VB10/1DC7-*
	R	No.20	.040	VB10/1RC19-*	VB10/1RC7-*
	U	No.16	.050		
CRIMP POT 	K	No.20-24	.031 <small>019-0075-002</small>	VB10/1KC19-*	VB10/1KC7-*
	N	No.20-24	.040 <small>019-0039-002</small>	VB10/1NC19-*	VB10/1NC7-*
	L	No.20-24	.050 <small>019-0087-002</small>		
	Z	No.16-20	.050 <small>019-0137-002</small>		
PIERCED TAB 	M	3 No.20	.031	VB10/1MC19-*	VB10/1MC7-*
	P	3 No.18	.050		
TURRET LUG 	T	No.20	.031	VB10/1TC19-*	VB10/1TC7-*
	V	No.20	.040	VB10/1VC19-*	VB10/1VC7-*

*NOTE: FOR MOUNTING STYLES AND HARDWARE, SEE PAGE 14. ADD SELECTED MOUNTING STYLE DASH NUMBER TO END OF CATALOG NUMBER.

CONTACTS

SERIES 10C11

SERIES 10V



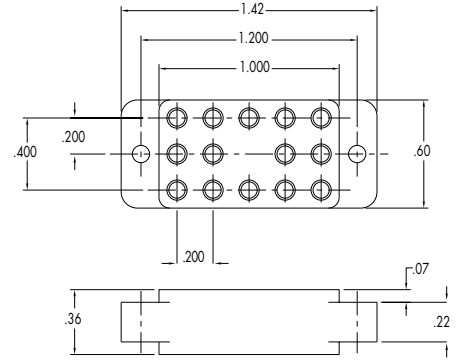
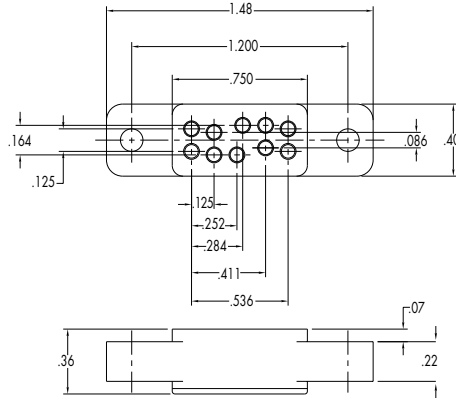
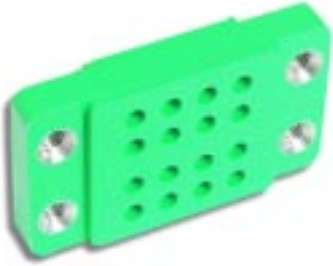
TERMINATION	TYPE	TERM ACCOM.	RELAY PIN SIZE	*AVAILABLE IN -43, -41, -42, -45, -76 MOUNTS ONLY	*AVAILABLE IN -3, -1, -2, -5 MOUNTS ONLY
DIP SOLDER 	A	.031	.031		VB10/1AV49-*
	B	.031	.040		VB10/1BV49-*
	F	.031	.050		
SOLDER POT 	D	No.20	.031		VB10/1DV49-*
	R	No.20	.040	VB10/1RWC11- (COMBINATION R & W PINS) W = .020 SOCKET	VB10/1RV49-*
	U	No.16	.050	VB10/1UWC11- (COMBINATION U & W PINS) W = .020 SOCKET	
CRIMP POT 	K	No.20-24	.031 019-0075-002		VB10/1KV49-*
	N	No.20-24	.040 019-0039-002		VB10/1NV49-*
	L	No.20-24	.050 019-0087-002		
	Z	No.16-20	.050 019-0137-002		
PIERCED TAB 	M	3 No.20	.031		VB10/1MV49-*
	P	3 No.18	.050	VB10/1PWC11- (COMBINATION P & W PINS) W = .020 SOCKET	
TURRET LUG 	T	No.20	.031		VB10/1TV49-*
	V	No.20	.040		VB10/1VV49-*

*NOTE: FOR MOUNTING STYLES AND HARDWARE, SEE PAGE 14. ADD SELECTED MOUNTING STYLE DASH NUMBER TO END OF CATALOG NUMBER.

CONTACTS

SERIES 10V

SERIES 14A



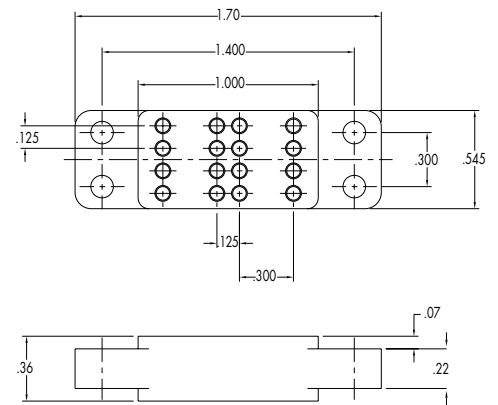
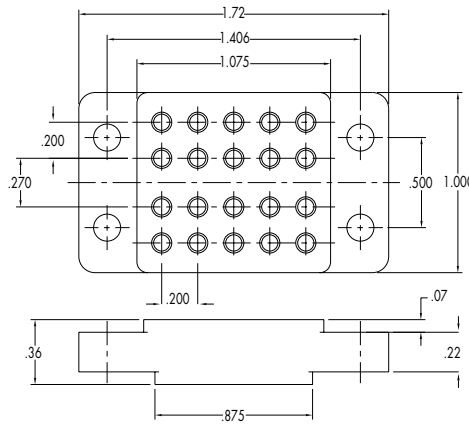
TERMINATION	TYPE	TERM ACCOM.	RELAY PIN SIZE	*AVAILABLE IN -3, -1, -2, -5 MOUNTS ONLY	*AVAILABLE IN -23, -21 MOUNTS ONLY	
	A	.031	.031	VB10/1AV10-*	VB14/1AA17-*	
	B	.031	.040			VB14/1BA17-*
	F	.031	.050			
	D	No.20	.031	VB10/1DV10-*	VB14/1DA17-*	
	R	No.20	.040			VB14/1RA17-*
	U	No.16	.050			
	K	No.20-24	.031 <i>019-0075-002</i>		VB14/1KA17-*	
	N	No.20-24	.040 <i>019-0039-002</i>			VB14/1NA17-*
	L	No.20-24	.050 <i>019-0087-002</i>			
	Z	No.16-20	.050 <i>019-0137-002</i>			
	M	3 No.20	.031		VB14/1MA17-*	
	P	3 No.18	.050			
	T	No.20	.031		VB14/1TA17-*	
	V	No.20	.040			VB14/1VA17-*

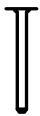



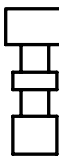
*NOTE: FOR MOUNTING STYLES AND HARDWARE, SEE PAGE 14. ADD SELECTED MOUNTING STYLE DASH NUMBER TO END OF CATALOG NUMBER.

CONTACTS

SERIES 16E

SERIES 16G



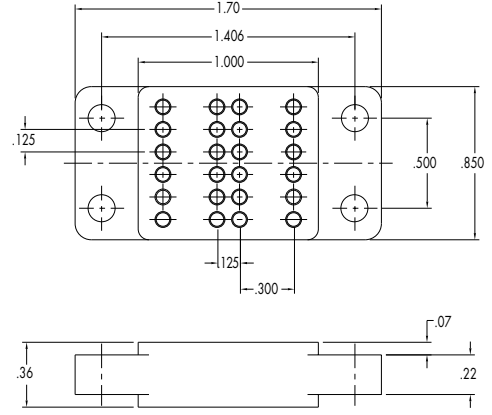
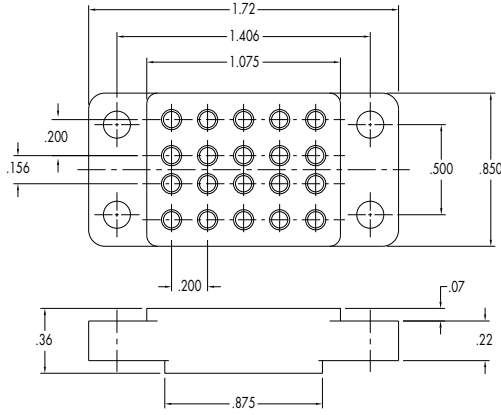
TERMINATION	TYPE	TERM ACCOM.	RELAY PIN SIZE	*AVAILABLE IN -43, -42, -45, -41 MOUNTS ONLY	*AVAILABLE IN -3, -21, -57, -22, -43 MOUNTS ONLY
DIP SOLDER 	A	.031	.031		VB16/1AG43*
	B	.031	.040	VB16/1BE20*	VB16/1BG43*
	F	.031	.050	VB16/1FE20*	
SOLDER POT 	D	No.20	.031		VB16/DG43*
	R	No.20	.040	VB16/1RE20*	VB16/1RG43*
	U	No.16	.050	VB16/1UE20*	
CRIMP POT 	K	No.20-24	.031 <small>019-0075-002</small>		VB16/1KG43*
	N	No.20-24	.040 <small>019-0039-002</small>	VB16/1NE20*	VB16/1NG43*
	L	No.20-24	.050 <small>019-0087-002</small>	VB16/1LE20*	
	Z	No.16-20	.050 <small>019-0137-002</small>	VB16/1ZE20*	
PIERCED TAB 	M	3 No.20	.031		VB16/1MG43*
	P	3 No.18	.050	VB16/1PE20*	
TURRET LUG 	T	No.20	.031		VB16/1TG43*
	V	No.20	.040		VB16/1VG43*

*NOTE: FOR MOUNTING STYLES AND HARDWARE, SEE PAGE 14. ADD SELECTED MOUNTING STYLE DASH NUMBER TO END OF CATALOG NUMBER.

CONTACTS

SERIES 16H

SERIES 24G

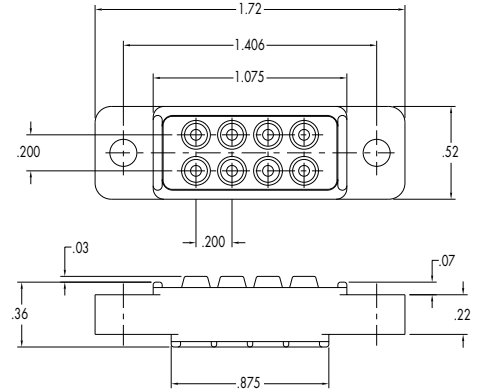
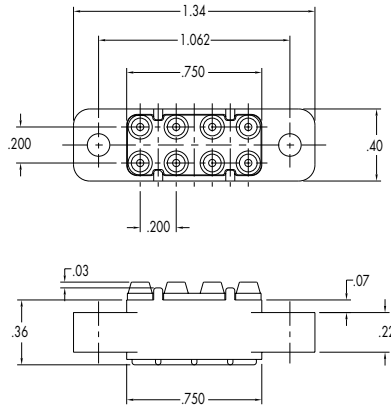


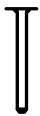



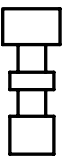
TERMINATION	TYPE	TERM ACCOM.	RELAY PIN SIZE	*AVAILABLE IN -43, -41, -42, -45 MOUNTS ONLY	*AVAILABLE IN -43, -41, -45, -42 MOUNTS ONLY
DIP SOLDER 	A	.031	.031		VB24/1AG43*
	B	.031	.040	VB16/1BH20*	VB24/1BG43*
	F	.031	.050	VB16/1FH20*	
SOLDER POT 	D	No.20	.031		VB24/1DG43*
	R	No.20	.040	VB16/1RH20*	VB24/1RG43*
	U	No.16	.050	VB16/1UH20*	
CRIMP POT 	K	No.20-24	.031 <small>019-0075-002</small>		VB24/1KG43*
	N	No.20-24	.040 <small>019-0039-002</small>	VB16/1NH20*	VB24/1NG43*
	L	No.20-24	.050 <small>019-0087-002</small>	VB16/1LH20*	
	Z	No.16-20	.050 <small>019-0137-002</small>	VB16/1ZH20*	
PIERCED TAB 	M	3 No.20	.031		VB24/1MG43*
	P	3 No.18	.050	VB16/1PH20*	
TURRET LUG 	T	No.20	.031		VB24/1TG43*
	V	No.20	.040		VB24/1VG43*

*NOTE: FOR MOUNTING STYLES AND HARDWARE, SEE PAGE 14. ADD SELECTED MOUNTING STYLE DASH NUMBER TO END OF CATALOG NUMBER.

CONTACTS

SOCKETS WITH FACE SEALS

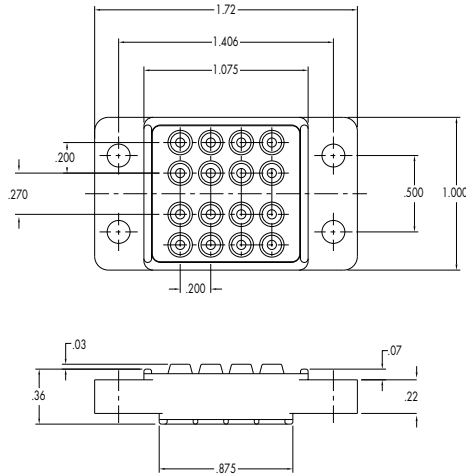


TERMINATION	TYPE	TERM ACCOM.	RELAY PIN SIZE	*AVAILABLE IN -3, -1, -2, -5 MOUNTS ONLY	*AVAILABLE IN -43, -41, -42, -45 MOUNTS ONLY
 DIP SOLDER	A	.031	.031	VE8/1AA49-*	
	B	.031	.040	VE8/1BA49-*	VE8/1BA11-*
	F	.031	.050		VE8/1FA11-*
 SOLDER POT	D	No.20	.031	VE8/1DA49-*	
	R	No.20	.040	VE8/1RA49-*	VE8/1RA11-*
	U	No.16	.050		VE8/1UA11-*
 CRIMP POT	K	No.20-24	.031 <small>019-0075-002</small>	VE8/1KA49-*	
	N	No.20-24	.040 <small>019-0039-002</small>	VE8/1NA49-*	VE8/1NA11-*
	L	No.20-24	.050 <small>019-0087-002</small>		VE8/1LA11-*
	Z	No.16-20	.050 <small>019-0137-002</small>		VE8/1ZA11-*
 PIERCED TAB	M	3 No.20	.031	VE8/1MA49-*	
	P	3 No.18	.050		VE8/1PA11-*
 TURRET LUG	T	No.20	.031	VE8/1TA49-*	
	V	No.20	.040	VE8/1VA49-*	

*NOTE: FOR MOUNTING STYLES AND HARDWARE, SEE PAGE 14. ADD SELECTED MOUNTING STYLE DASH NUMBER TO END OF CATALOG NUMBER.

CONTACTS

SOCKETS WITH FACE SEALS



STANDARD SOCKET MATERIALS AND FINISHES FOR SERIES 8A, 8V, 8A11, 10C, 10C11, 10V, 14A, 16E, 16G, 16H, 24G AND SOCKETS WITH FACE SEALS

Insulators

Diallyl Phthalate per ASTM-D-5948 type SDG-F, color green

Contacts

Copper alloy

Contact Plating

Standard is .000030 gold per MIL-G-45204 over .000050 min. nickel per QQ-N-290

Contact Pressure Band

Stainless steel 17-7 PH, heat treated

Contact Retention Ring

Beryllium copper alloy, heat treated

Molded-in inserts

Stainless steel passivated

Loose Hardware

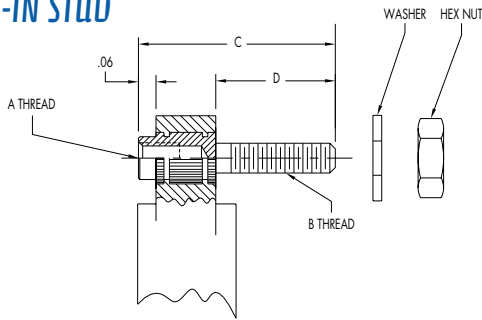
Stainless steel passivated

TERMINATION	TYPE	TERM ACCOM.	RELAY PIN SIZE	*AVAILABLE IN -43, -41, -42, -45 MOUNTS ONLY
DIP SOLDER 	A	.031	.031	
	B	.031	.040	VE16/1BE20*
	F	.031	.050	VE16/1FE20*
SOLDER POT 	D	No.20	.031	
	R	No.20	.040	VE16/1RE20*
	U	No.16	.050	VE16/1UEZ0*
CRIMP POT 	K	No.20-24	.031 019-0075-002	
	N	No.20-24	.040 019-0039-002	VE16/1NE20*
	L	No.20-24	.050 019-0087-002	VE16/1LE20*
	Z	No.16-20	.050 019-0137-002	VE16/1ZE20*
PIERCED TAB 	M	3 No.20	.031	
	P	3 No.18	.050	VE16/1PEZ0*
TURRET LUG 	T	No.20	.031	
	V	No.20	.040	

MOUNTING STYLES & HARDWARE

Add Selected Mounting Style "Dash No." to End of Catalog Number

MOLDED-IN STUD



Dash No.	A	B	C	D	Use Only with Series
-22	.086-56	.086-56	.56	.277	16G43
-57	.086-56	.086-56	.72	.433	8A11, 16G43
-2	.112-40	.112-40	.56	.277	8A49, 8A10, 8A9, 8V49, 10C49, 10V49, 10V10
-5	.112-40	.112-40	.72	.433	8A49, 8A10, 8A9, 8V49, 10C49, 10V49, 10V10, 16G43
-42	.138-32	.138-32	.56	.277	8A11, 10C11, 16E20, 16H20, 24G43
-45	.138-32	.138-32	.72	.433	8A11, 10C11, 16E20, 16H20, 24G43

THRU HOLE

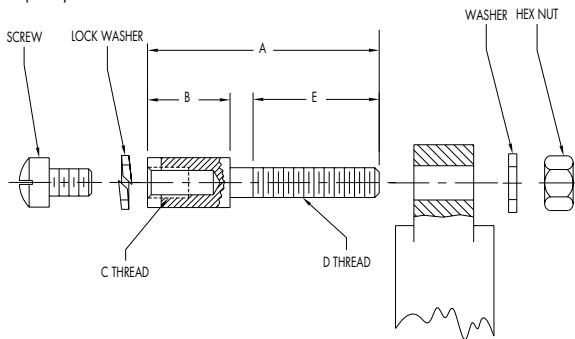
Dash No.	Size	Use Only with Series
-23	.086 (.096)	8A7, 8A19, 8V5, 8V7, 8A11, 10C19, 10C7, 14A17
-3	.112 (.125)	8A49, 8A10, 8A9, 8V49, 10C49, 10V49, 10V10, 16G43
-43	.138 (.150)	8A10, 8A11, 10C11, 16E20, 16G43, 16H20

MOLDED-IN THREADED INSERT

Dash No.	Size	Use Only with Series
-21	.086-56	14A17, 16G43
-1	.112-40	8A49, 8A10, 8A9, 8V49, 10C49, 10V49, 10V10
-41	.138-32	10C11, 16E20, 16H20, 24G43, 8A11

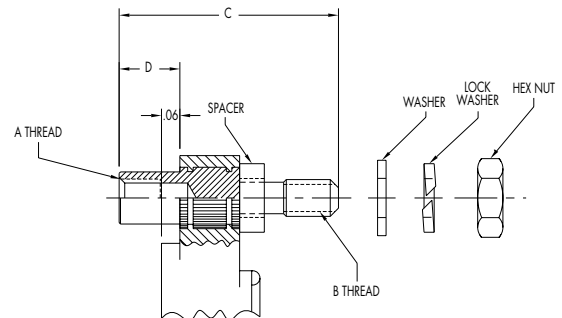
LOOSE STUD

Order Separately from Socket



Stud. Assy. No.	A	B	C	D	E
VST-17/SS-H	.563	.125	.086-56		.250
VST-53/SS-H	.605	.145	.086-56	.112-40	.250
VST-16/SS-H	.605	.192	.086-56		.250
VST-61/SS-H	.687	.187	.086-56	.112-40	.200
VST-20/SS-H	.700	.192			.250
VST-49/SS-H	.687	.250			
VST-51/SS-H	.812	.375	.086-56	.112-40	.187
VST-52/SS-H	.937	.500			
VST-15/SS-H	.845	.301		.112-40	.460
VST-48/SS-H	.857	.312			.300
VST-47/SS-H	.920	.375	.138-32		.325

MOLDED-IN STUD



Dash No.	A	B	C	D	Use Only with Series
-80	.138-32	.138-32	.80	.22	8A11

STANDARD SOCKET ASSEMBLY TOOLS

Assembly Tools Series 8A, 8V, 8A11, 10C, 10C11, 10V, 14A, 16E, 16G, 16H, 24G & Sockets with Face Seals

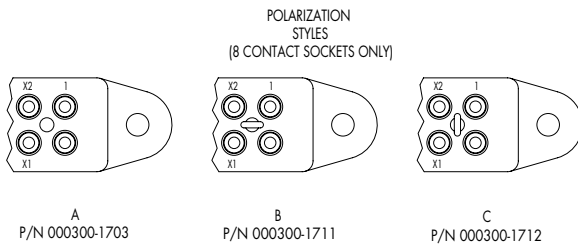
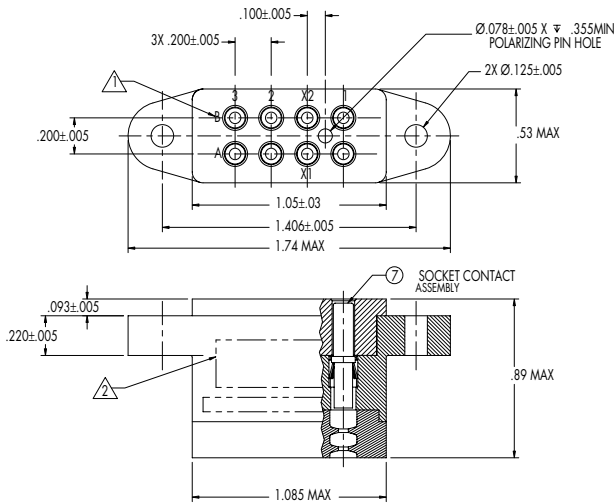
Crimp Tools	Contact Type	Wire Range	Part Numbers	
			Locator	Tool
Adjustable type crimp tool. The screw stud in the handle acts as a trip and determines the depth of crimp of the indenters. This tool is for Viking contacts used in sockets on pages 2 through 13, except for type Z contacts, which require crimp tool below.	K N L	#20-24	038-0001-000 Furnished with crimp tool	000407-0001
	Z	#16-20	Furnished with crimp tool	000407-0005
Non-adjustable type crimp tool. The locators (stored in the handle) have shoulders that determine depth of crimp of the indenters, and are fixed. This tool is for Z type contacts used in sockets listed on pages 6, 10, 11, 12 and 13.	N K L	#20-24	000407-0003	
	Z	#16-20	000407-0027	
Insertion Tool <i>(Required for crimp contacts only)</i> Sturdy machined hand tool for inserting crimped contact-plus-wire into the insulator.	N K	#20-24	000407-0004	
	L Z	#20-24 #16-20	000407-0028	
Removal Tool Reliable spring-loaded, single-action hand tool.	N K	#20-24	000407-0004	
	L Z	#20-24 #16-20	000407-0028	

MINIATURE RELAY SOCKETS FOR MIL-PRF-6106

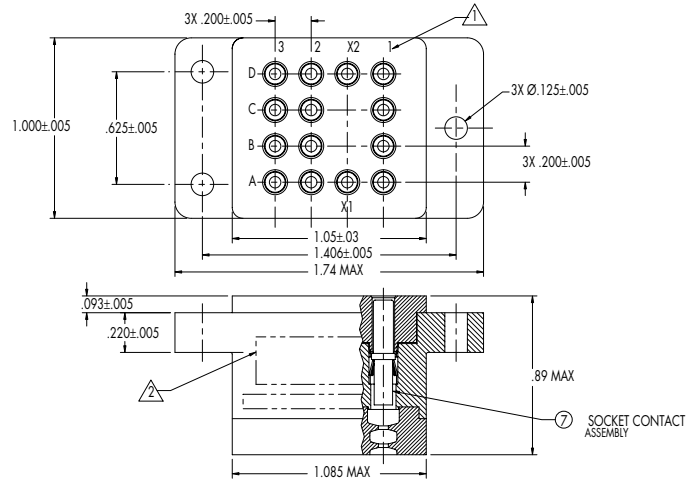
Rear Entry and Rear Release



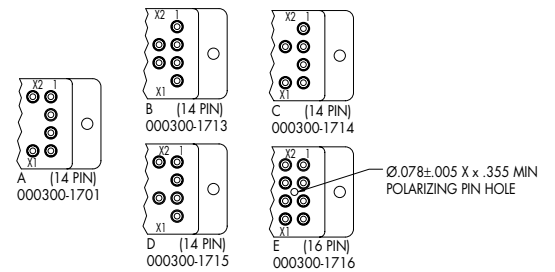
8 CONTACTS



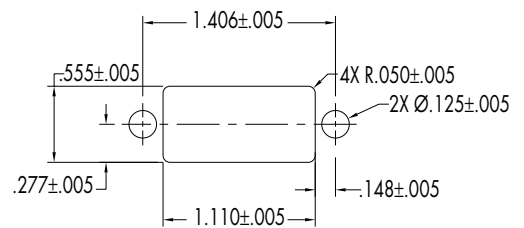
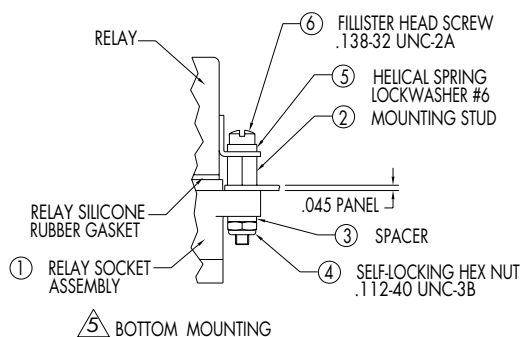
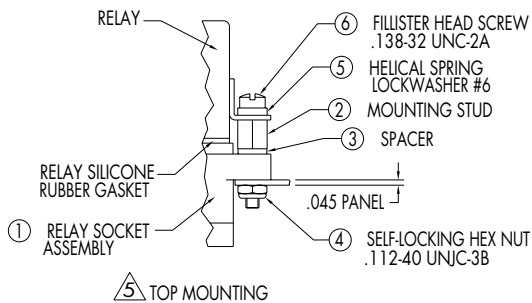
14 & 16 CONTACTS



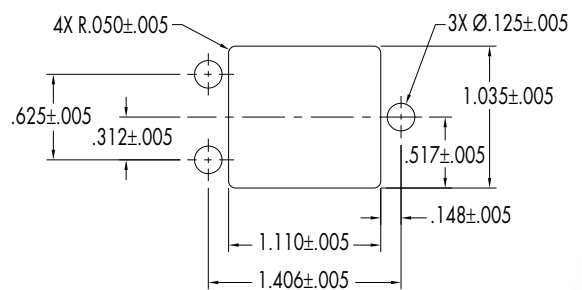
POLARIZATION STYLES (14 & 16 SOCKET ONLY)



PANEL MOUNTING HOLE LAYOUTS



(8 CONTACTS ONLY)



(14 & 16 CONTACTS ONLY)

MINIATURE RELAY SOCKETS FOR CRYSTAL CAN RELAYS PER MIL-PRF-6106

Rear Entry and Rear Release

Notes

- Contact identification: The mating and bottom faces are marked in contrasting color .055±.020 high gothic characters located approximately as shown.
- Marking: Each relay socket assembly will be permanently and legibly marked with the manufacturer's name or trade mark. Manufacturers/part number and date code located on either side.

Sample: A. Name: Viking B. Part Number: 000300-17XX C. Date Code: 01 15
Year Week

- The relay socket assembly accepts size 16 socket contacts, M39029/92-533. Socket contacts are supplied with relay socket assembly.
- Socket meets the requirements of MIL-PRF-12883.
- Mounting hardware included, see mounting diagram for suggested mounting applications.

Materials and Finishes

Socket body and cover: Thermoplastic (PTFE) glass reinforced in accordance with MIL-P-46179. Color black, UL94V-0.

Grommet: Silicone rubber per MIL-1-17214.

Mounting Hardware (Fillister head screw, mounting stud, lockwasher, hex nut, spacer): Stainless steel, passivated.

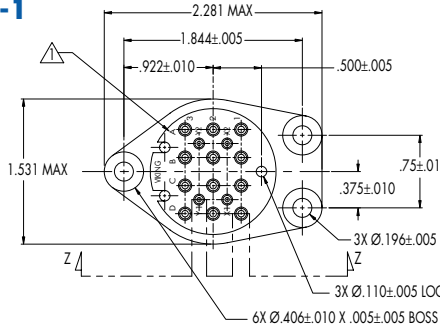
Retention Clips: Beryllium copper, heat treated.

Item No.	Viking Part Number	Description	Qty. Supplied
8 Contacts			
7	019-0793-001	Socket Contact Assembly M39029/92-533	8
6	990-0004-021	Fillister Head Screw (.138-32 UNC-2A)	2
5	990-0001-063	Helical Spring Lock Washer Size #6 (OD:250 Max X ID: 148 Max X .031 Min Thick)	2
4	990-0002-033	Self-Locking Hex Nut .112-40 UNJC-3B (Width across flats: .255 Max X Height: .125 Max)	2
3	108-0022-000	Spacer (OD: .245 x ID: .125 x .045 thick)	2
2	118-0090-000	Mounting Stud (.112-40 UNC-2A)	2
1	000300-1703 000300-1711 000300-1712	Relay Socket Assy { Socket Body (1) Cover (1) #16 Retention Clip (18) Grommet (1)	1

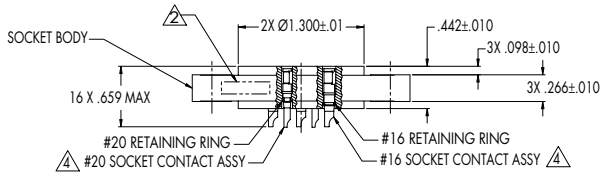
Item No.	Viking Part Number	Description	Qty. Supplied
14 & 16 Contacts			
7	019-2176-001	Socket Contact Assembly M39029/92-533	14&16
6	990-0004-021	Fillister Head Screw (.138-32 UNC-2A)	3
5	990-0001-063	Helical Spring Lock Washer Size #6 (OD: 250 Max X ID: 148 Max X .031 Min Thick)	3
4	990-0002-033	Self-Locking Hex Nut .112-40 UNJC-3B (Width across flats: .255 Max X Height: .125 Max)	3
3	108-0022-000	Spacer (OD: .245 X ID: .125 X .045 Thick)	3
2	118-0090-000	Mounting Stud (.112-40 UNC-2A)	3
1	000300-1701 000300-1713 000300-1714 000300-1715 000300-1716	Relay Socket Assy { Socket Body (1) Cover (1) #16 Retention Clip (14 & 16) Grommet (1)	1

MS25462-1 AND MS25330-1 RELAY SOCKETS

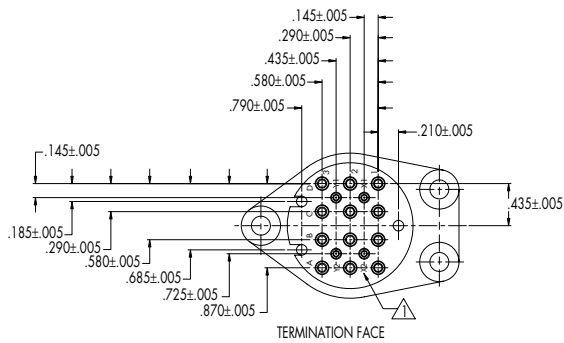
MS25462-1



MATING FACE



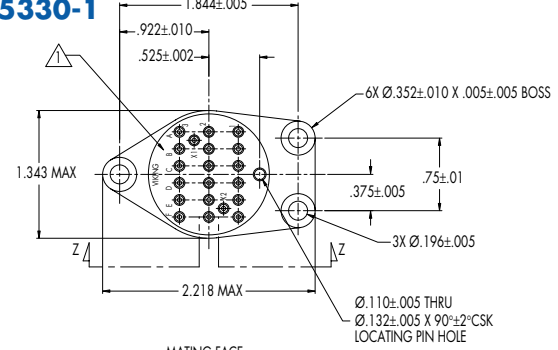
SECTION Z-Z



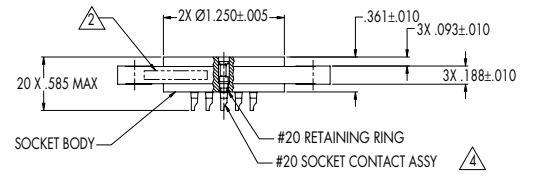
TERMINATION FACE



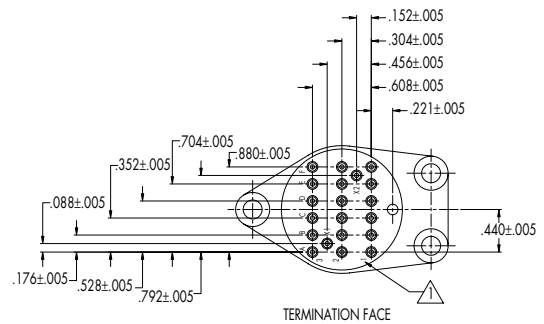
MS25330-1



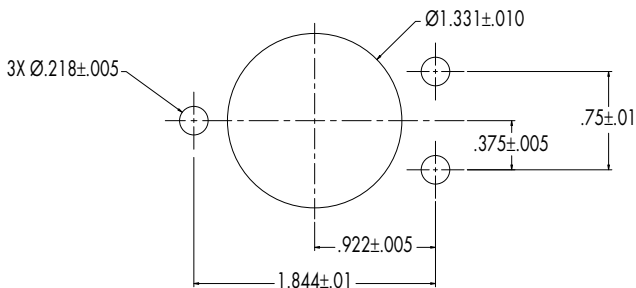
MATING FACE



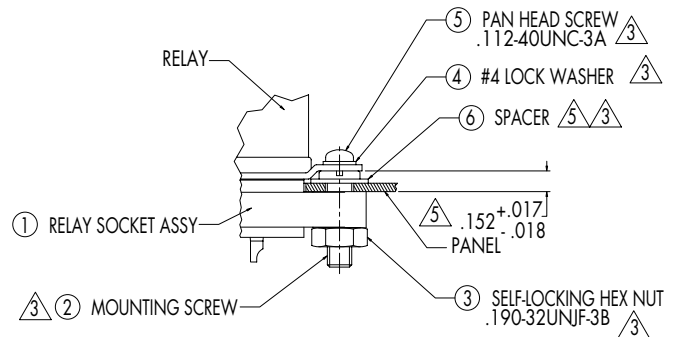
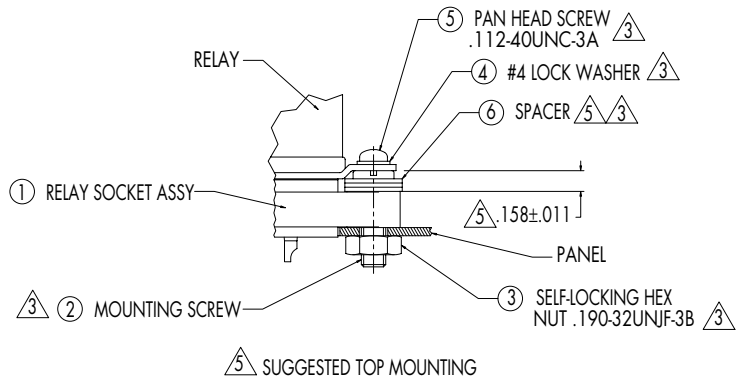
SECTION Z-Z



TERMINATION FACE



PANEL MOUNTING DIMENSIONS





000300-1439 (MS25462-1) & 000300-1443 (MS25330-1)

Notes

1. Molded gothic characters raised .003-.008 X .060±.010 high. Located approximately as shown, on mating and bottom faces.
2. Marking: Each relay socket assembly will be permanently and legibly marked with the manufacturer's part number and date code, located on either side.

Sample: Part Number: 000300-14XX Date Code: 01 15
 Year Week

3. Hardware (Items 2, 3, 4, 5, 6) mounting screw, hex nuts, lock washer, pan head screw and spacer are shipped unassembled with (Item 1) relay socket assembly.
4. The #20 and #16 socket contact assemblies are shipped assembled to the relay socket body as shown.
5. Use (Item 6) spacers supplied with the relay socket assembly to accomplish the indicated dimension.
6. Socket meets the requirements of the following:
 MS25462-1 (000300-1439) and MS25330-1 (000300-1443)

Materials and Finishes

Socket body: Diallyl Phthalate glass reinforced per ASTM D5948, Type SDG-F, color green

#20 and #16 Socket Contact Assembly:

Contact body: Copper alloy, gold over nickel plate.

Contact band: Stainless steel, heat treated.

#20 and #16 retention ring: Beryllium copper, heat treated.

Mounting screw: Stainless steel 300 series, passivated.

Hex nuts: Steel, cadmium plated.

Lock Washer: Steel, cadmium plated.

Pan screw head: Steel, cadmium plated.

Spacer: Stainless steel 300 series, passivated.

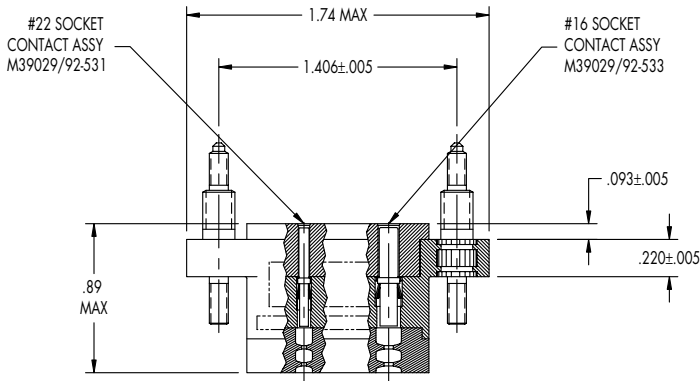
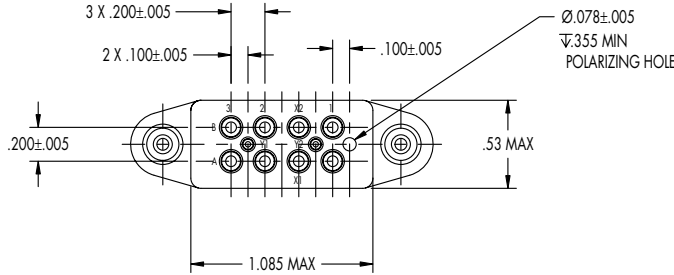
Item No.	Viking Part Number	Description	Qty. Supplied
		000300-1439 (MS25462-1)	
6	108-0017-000	Spacer, Size #10, Mounting screw	9
5	980-0005-003	Screw, pan head, cruciform recess .112-40UNC-3A	3
4	980-0004-018	Washer, lock-spring, helical, size #4	3
3	980-0003-010	Self-locking hex nut .190-32UNJF-3B	3
2	101-0002-000	Mounting screw .190-32UNF-2A	3
1	Relay Socket Assy	{ Socket Body (1) #20 Socket Contact Assy (4) #16 Socket Contact Assy (12) #20 Retaining Ring (4) #16 Retaining Ring (12)	1

Item No.	Viking Part Number	Description	Qty. Supplied
		000300-1443 (MS25330-1)	
6	108-0017-000	Spacer, Size #10, Mounting screw	9
5	980-0005-003	Screw, pan head, cruciform recess .112-40UNC-3A	3
4	980-0004-018	Washer, lock-spring, helical, size #4	3
3	980-0003-010	Self-locking hex nut .190-32UNJF-3B	3
2	101-0002-000	Mounting screw .190-32UNF-2A	3
1	Relay Socket Assy	{ Socket Body (1) #20 Socket Contact Assy (20) #20 Retaining Ring (20)	1

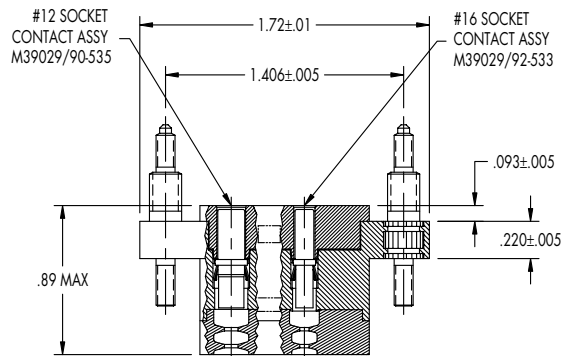
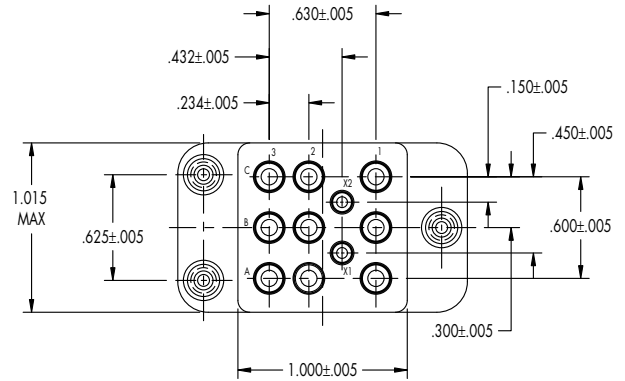
MIL-PRF-12883 RELAY SOCKETS QPL

Rear Entry and Rear Release

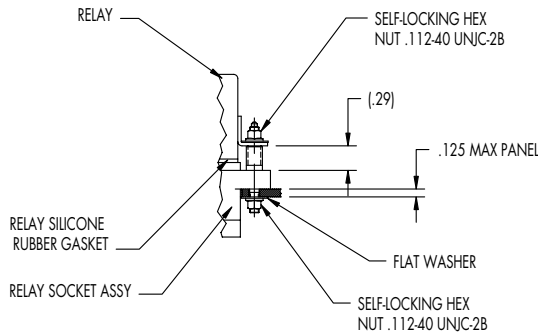
Relay Sockets That Meet MIL-PRF-12883 Requirements...



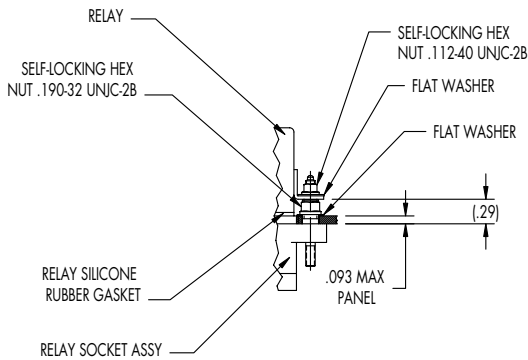
M12883/41-20
VIKING P/N 003005-0001



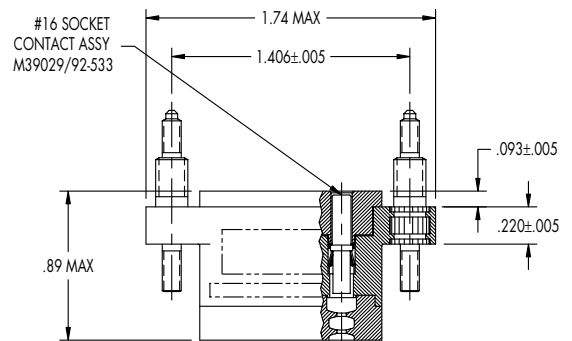
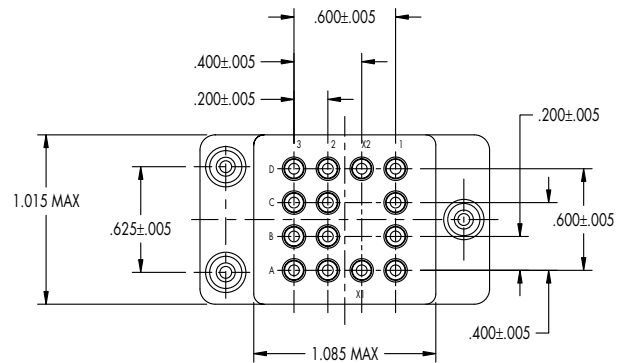
M12883/48-02
VIKING P/N 003014-0001



TOP MOUNTING

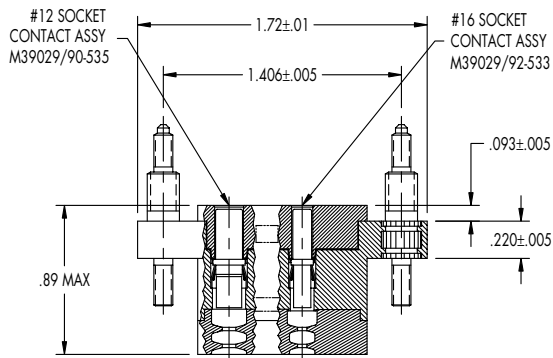
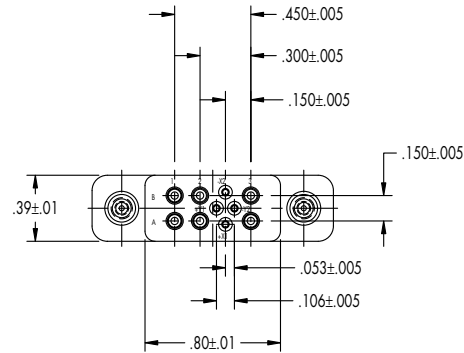
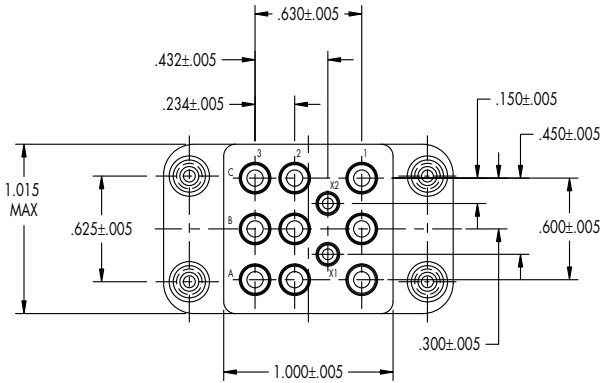


BOTTOM MOUNTING

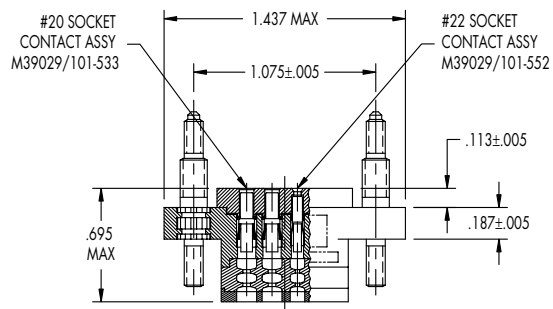


M12883/40-19
VIKING P/N 003019-0001

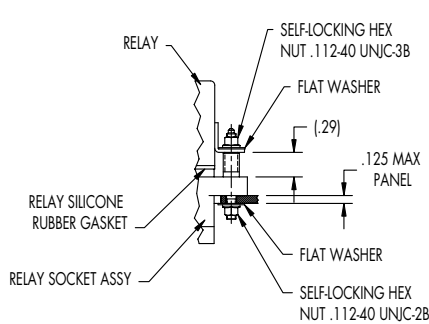
Relay Sockets That Meet MIL-PRF-12883 Requirements...



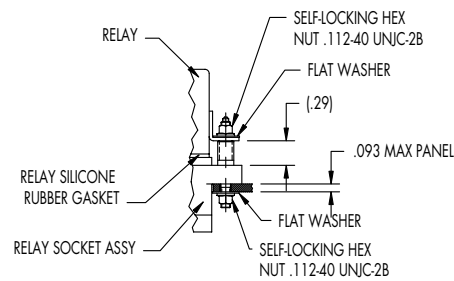
M12883/48-06
VIKING P/N 003015-0001



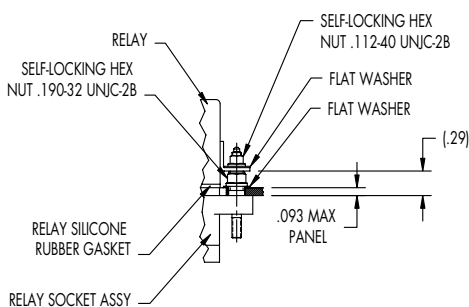
M12883/45-04
VIKING P/N 003016-0001



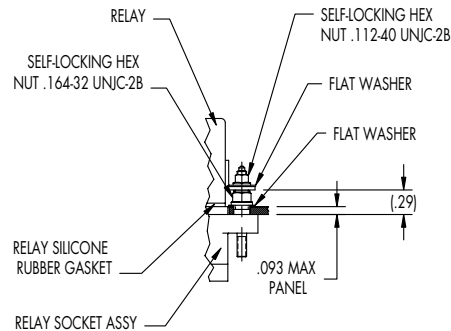
TOP MOUNTING



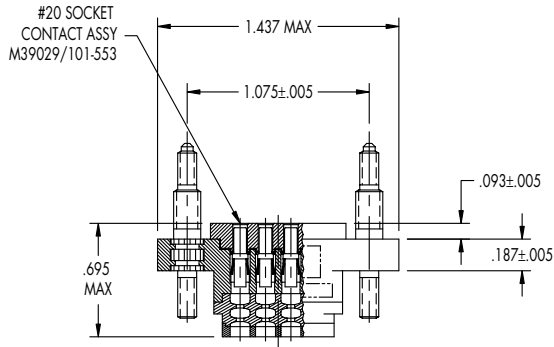
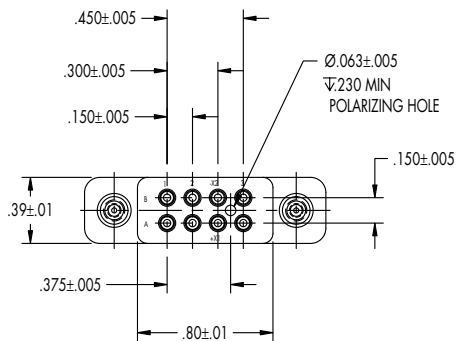
TOP MOUNTING



BOTTOM MOUNTING

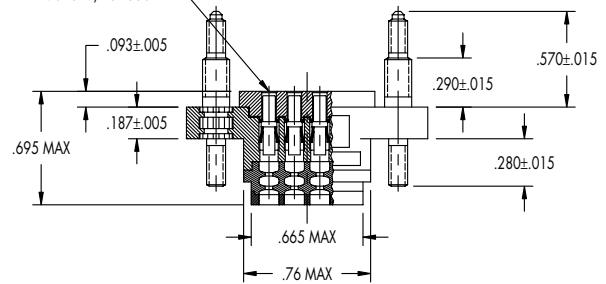
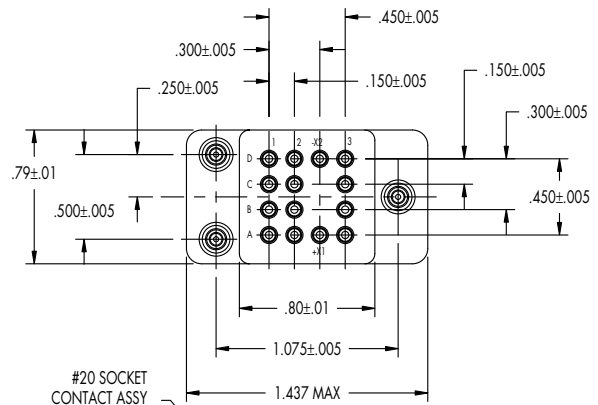


BOTTOM MOUNTING



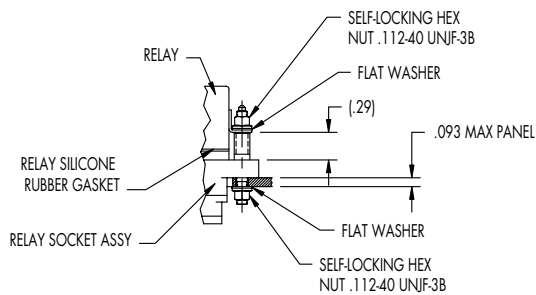
M12883/45-01

VIKING P/N 003017-0001

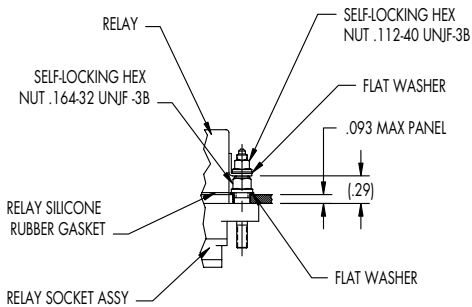


M12883/44-01

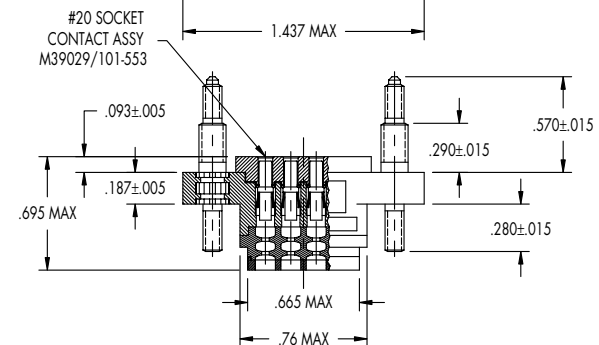
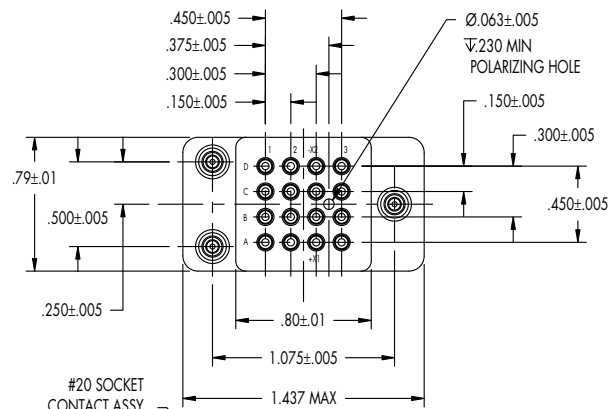
VIKING P/N 003022-0001



TOP MOUNTING



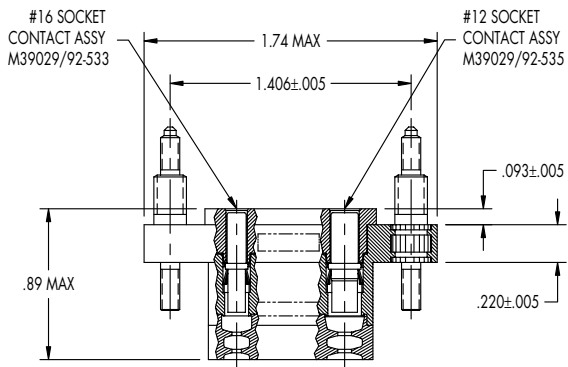
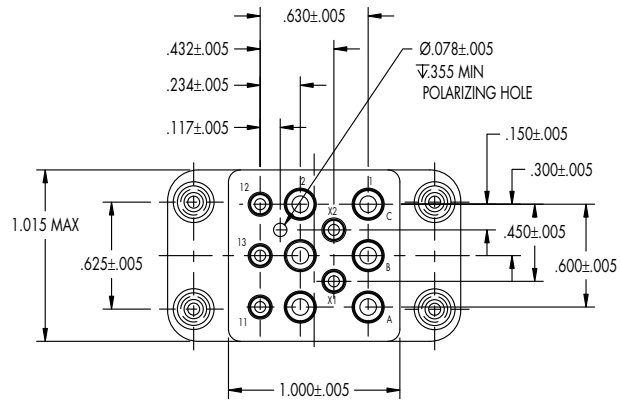
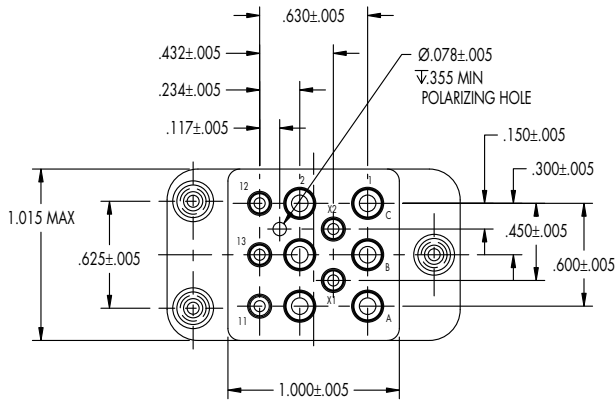
BOTTOM MOUNTING



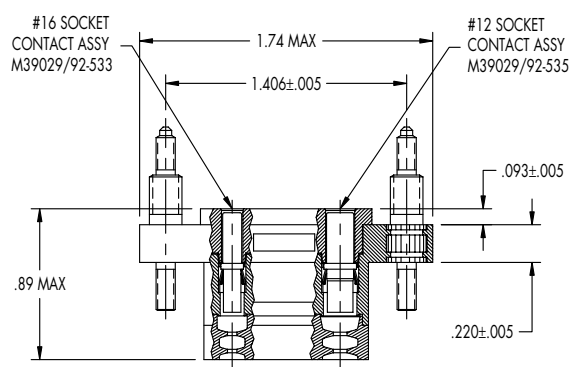
M12883/44-02

VIKING P/N 003021-0001

Relay Sockets That Meet MIL-PRF-12883 Requirements...

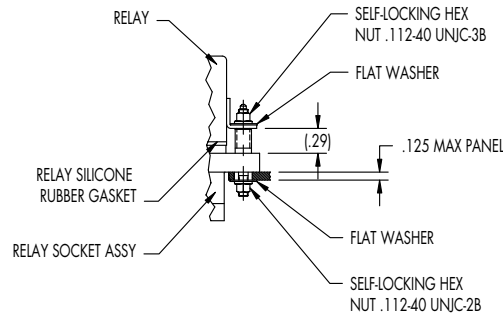


VIKING P/N 003006-0001

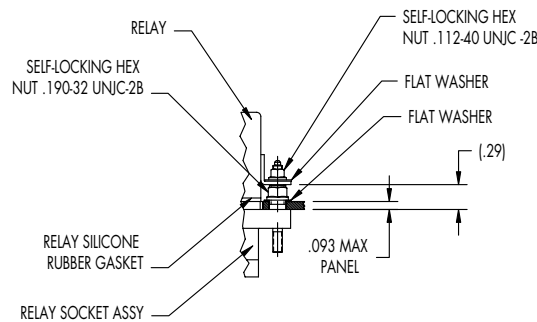


VIKING P/N 003020-0001

RELAY SOCKETS THAT MEET THE REQUIREMENTS OF MIL-PRF-12883

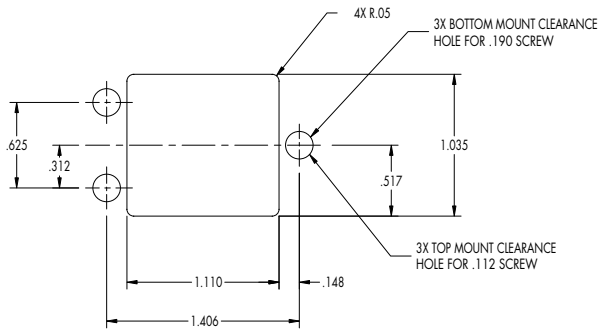


TOP MOUNTING

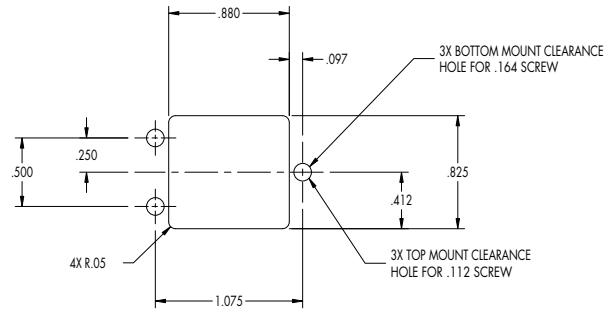


BOTTOM MOUNTING

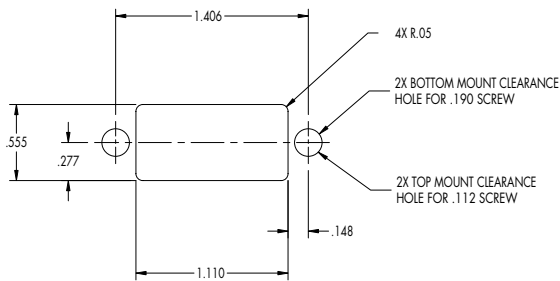
MIL-PRF-12883 RELAY SOCKETS PANEL MOUNTING DIMENSIONS



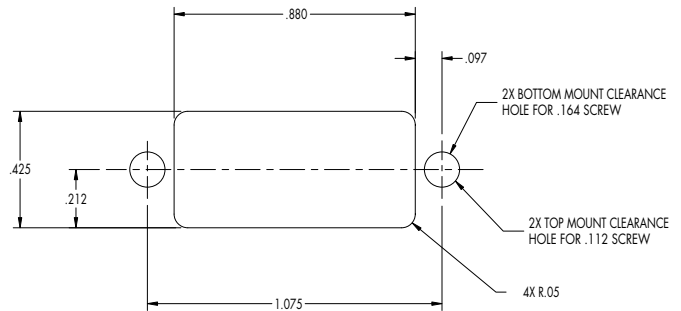
M12883/40-19



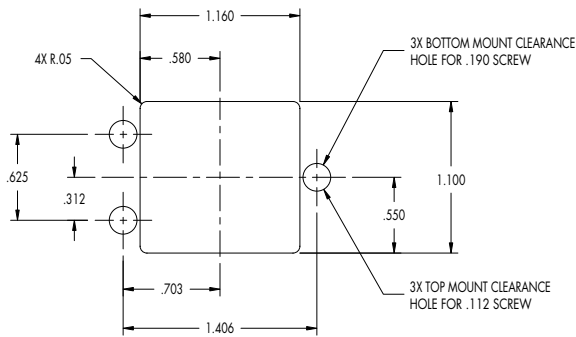
M12883/44-01 & M12883/44-02



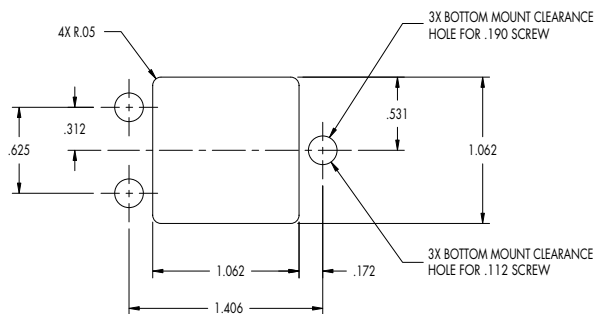
M12883/41-20



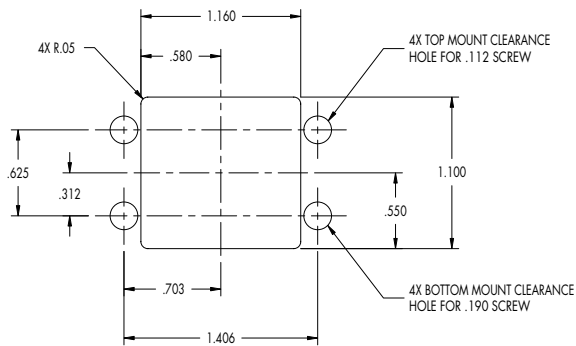
M12883/45-01 & M12883/45-04



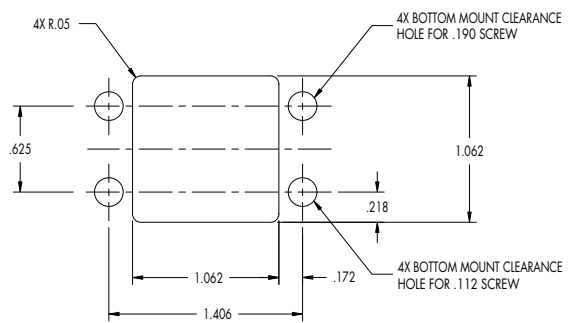
M12883/48-02



003006-0001



M12883/48-06



003020-0001

MIL-PRF-12883 RELAY SOCKETS, CONTACTS, TOOLS AND TORQUE VALUES

M12883 Relay Socket, Contacts & Tools

Socket Contact Part Numbers	Basic Crimp Tools	Positioners	Insertion & Extraction Tools
M39029/92-531 (019-0794-001) (SIZE #22)	M22520/2-01	M22520/2-14	M81969/14-01
M39029/92-533 (019-0793-001) (SIZE #16)	M22520/1-01	M22520/1-02	M81969/14-03
M39029/92-535 (019-0792-001) (SIZE #12)	M22520/1-01	M22520/1-02	M81969/14-04
M39029/101-552 (109-0795-001) (SIZE #22)	M22520/7-01	M22520/7-11	M81969/16-04
M39029/101-553 (019-0796-001) (SIZE #20)	M22520/7-01	M22520/7-12	M81969/16-01

Mounting Hardware Installation Torque Requirements

- 112-40 UNJC-3B Self-Locking Hex Nut: 4±1 inch/lbs.
- .164-32 UNJC-3B Self-Locking Hex Nut: 15±1 inch/lbs.
- .190-32 UNJC-3B Self-Locking Hex Nut: 18±1 inch/lbs.

Torque Values for the Molded-In Mounting Studs

The mounting studs are molded into the body as shown. The mounting studs are designed to prevent rotation without additional hardware when tested to the following torque:

20 +1/-0 inch/lbs.	M12883/44-01 (003022-0001) M12883/44-02 (003021-0001) M12883/45-01 (003017-0001) M12883/45-04 (003016-0001)
24 +1/-0 inch/lbs.	M12883/40-19 (003019-0001) M12883/41-20 (003005-0001) M12883/48-02 (003014-0001) M12883/48-06 (003015-0001) MIL-PRF-12883 (003006-0001) MIL-PRF-12883 (003020-0001)

FAX FORM

- I would like to have a **WPI Viking** representative contact me to review my interconnection needs.
- I would like a product demonstration.

My interconnection question is:

(If you prefer, you can also send your question to info@wpi-interconnect.com or sales@vikcon.com)

Please send me more information on the following product lines:

Name: _____ Title: _____

Company Name: _____

Business or Service: _____

Address: _____

City, State, Zip Code: _____

Phone: _____ Fax: _____

Web Address: _____

Email: _____

*Please copy and fax this form back to **WPI Viking** at 805-553-9655.
We look forward to helping with your interconnect solutions.*



WPI Viking Electronics, Inc.

5455 Endeavour Court
Moorpark, CA 93021
tel 805-553-9633
fax 805-553-9655

Visit our web site at

www.wpi-interconnect.com
www.vikingconnectors.com

